

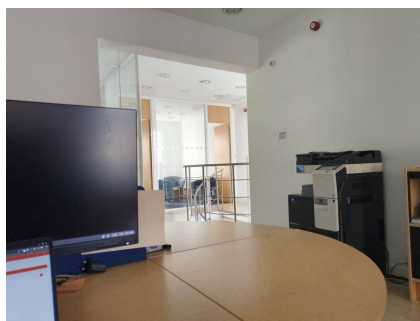
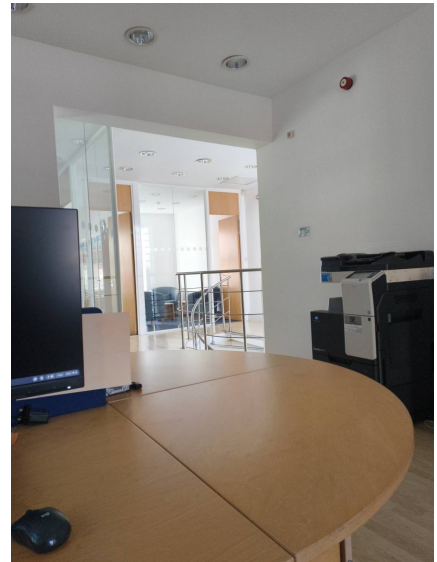
Front of Property

Reference	HDT62478
Site	107-115 Long Acre, London WC2E 9NT
Client	Test Client
Date	05/01/26
Engineer	Lee Thompson



Asset: Door 1 - Rear door		
Door Closing		
Before touching the door, is it properly closed fully into the frame?	✗	44
Does the door close from fully open?	✓	4
Does the door close when held open at 100mm?	✓	5
Does the door close without binding on the floor?	✓	6
Frame Gaps		
Head - 4mm or less?	✗	7
Closing edge - 4mm or less (unless rebated)?	✓	8
Hanging edge - 4mm or less (unless rebated)?	✓	9
Threshold - 6mm or less?	✓	0
Seals		
Intumescent and smoke (where fitted): Head of door/frame complete and in good condition?	N/A	1
Intumescent and smoke (where fitted): Hanging edge of door/frame complete and in good condition?	✓	2
Intumescent and smoke (where fitted): Closing edge of door/frame complete and in good condition?	✓	3
Leaf		
Both front and back faces undamaged?	✓	4
All edges undamaged?	✓	5
Frame		
Undamaged (e.g. impact)?	✓	6
Fixed securely to surrounding structure?	✓	7
No gaps between frame and surrounding structure?	✗	8
Additional		
Closer: Fitted securely and working effectively?	✓	9
3 hinges fitted and in good condition?	✗	0
Hinge screw fixings in place?	✓	1
Lock/latch in good condition and working correctly?	✓	2
Glass undamaged?	✓	3
Glass retention system complete and undamaged?	✗	4
Letterbox: Intumescent liner around inside or sprung metal flaps that close effectively?	✓	5

Asset Images - Door 1 - Rear door



Asset: 22 - front		
Door Closing		
Before touching the door, is it properly closed fully into the frame?	✓	
Does the door close from fully open?	✓	
Does the door close when held open at 100mm?	✓	
Does the door close without binding on the floor?	✓	
Frame Gaps		
Head - 4mm or less?	✓	
Closing edge - 4mm or less (unless rebated)?	✓	
Hanging edge - 4mm or less (unless rebated)?	✓	
Threshold - 6mm or less?	✓	
Seals		
Intumescent and smoke (where fitted): Head of door/frame complete and in good condition?	✓	
Intumescent and smoke (where fitted): Hanging edge of door/frame complete and in good condition?	✓	
Intumescent and smoke (where fitted): Closing edge of door/frame complete and in good condition?	✓	
Leaf		
Both front and back faces undamaged?	✓	
All edges undamaged?	✓	
Frame		
Undamaged (e.g. impact)?	✓	
Fixed securely to surrounding structure?	✓	
No gaps between frame and surrounding structure?	✓	
Additional		
Closer: Fitted securely and working effectively?	✓	
3 hinges fitted and in good condition?	✓	
Hinge screw fixings in place?	✓	
Lock/latch in good condition and working correctly?	✓	
Glass undamaged?	✓	
Glass retention system complete and undamaged?	✓	
Letterbox: Intumescent liner around inside or sprung metal flaps that close effectively?	✓	

Asset Images - 22 - front



Asset: 3 - hall		
Door Closing		
Before touching the door, is it properly closed fully into the frame?	✓	
Does the door close from fully open?	✓	
Does the door close when held open at 100mm?	✓	
Does the door close without binding on the floor?	✓	
Frame Gaps		
Head - 4mm or less?	✓	
Closing edge - 4mm or less (unless rebated)?	✓	
Hanging edge - 4mm or less (unless rebated)?	✓	
Threshold - 6mm or less?	✓	
Seals		
Intumescent and smoke (where fitted): Head of door/frame complete and in good condition?	✓	
Intumescent and smoke (where fitted): Hanging edge of door/frame complete and in good condition?	✓	
Intumescent and smoke (where fitted): Closing edge of door/frame complete and in good condition?	✓	
Leaf		
Both front and back faces undamaged?	✗	
All edges undamaged?	✗	
Frame		
Undamaged (e.g. impact)?	✓	
Fixed securely to surrounding structure?	✓	
No gaps between frame and surrounding structure?	✓	
Additional		
Closer: Fitted securely and working effectively?	✓	
3 hinges fitted and in good condition?	✓	
Hinge screw fixings in place?	✓	
Lock/latch in good condition and working correctly?	✓	
Glass undamaged?	N/A	
Glass retention system complete and undamaged?	N/A	
Letterbox: Intumescent liner around inside or sprung metal flaps that close effectively?	N/A	

Asset: door 4 - basement		
NO ACCESS		
Door Closing		
Before touching the door, is it properly closed fully into the frame?	N/A	
Does the door close from fully open?	N/A	
Does the door close when held open at 100mm?	N/A	
Does the door close without binding on the floor?	N/A	
Frame Gaps		
Head - 4mm or less?	N/A	
Closing edge - 4mm or less (unless rebated)?	N/A	
Hanging edge - 4mm or less (unless rebated)?	N/A	
Threshold - 6mm or less?	N/A	
Seals		
Intumescent and smoke (where fitted): Head of door/frame complete and in good condition?	N/A	
Intumescent and smoke (where fitted): Hanging edge of door/frame complete and in good condition?	N/A	
Intumescent and smoke (where fitted): Closing edge of door/frame complete and in good condition?	N/A	
Leaf		
Both front and back faces undamaged?	N/A	
All edges undamaged?	N/A	
Frame		
Undamaged (e.g. impact)?	N/A	
Fixed securely to surrounding structure?	N/A	
No gaps between frame and surrounding structure?	N/A	
Additional		
Closer: Fitted securely and working effectively?	N/A	
3 hinges fitted and in good condition?	N/A	
Hinge screw fixings in place?	N/A	
Lock/latch in good condition and working correctly?	N/A	
Glass undamaged?	N/A	
Glass retention system complete and undamaged?	N/A	
Letterbox: Intumescent liner around inside or sprung metal flaps that close effectively?	N/A	

Asset: ww1 - ww1		
Door Closing		
Before touching the door, is it properly closed fully into the frame?	✓	
Does the door close from fully open?	✓	
Does the door close when held open at 100mm?	✓	
Does the door close without binding on the floor?	✓	
Frame Gaps		
Head - 4mm or less?	✓	
Closing edge - 4mm or less (unless rebated)?	✓	
Hanging edge - 4mm or less (unless rebated)?	✓	
Threshold - 6mm or less?	✓	
Seals		
Intumescent and smoke (where fitted): Head of door/frame complete and in good condition?	✓	
Intumescent and smoke (where fitted): Hanging edge of door/frame complete and in good condition?	✓	
Intumescent and smoke (where fitted): Closing edge of door/frame complete and in good condition?	✓	
Leaf		
Both front and back faces undamaged?	✓	
All edges undamaged?	✓	
Frame		
Undamaged (e.g. impact)?	✓	
Fixed securely to surrounding structure?	✓	
No gaps between frame and surrounding structure?	✓	
Additional		
Closer: Fitted securely and working effectively?	✓	
3 hinges fitted and in good condition?	✓	
Hinge screw fixings in place?	✓	
Lock/latch in good condition and working correctly?	✓	
Glass undamaged?	N/A	
Glass retention system complete and undamaged?	N/A	
Letterbox: Intumescent liner around inside or sprung metal flaps that close effectively?	N/A	

Asset: 1 - 1		
Door Closing		
Before touching the door, is it properly closed fully into the frame?	✓	
Does the door close from fully open?	✓	
Does the door close when held open at 100mm?	✓	
Does the door close without binding on the floor?	✓	
Frame Gaps		
Head - 4mm or less?	✓	
Closing edge - 4mm or less (unless rebated)?	✓	
Hanging edge - 4mm or less (unless rebated)?	✓	
Threshold - 6mm or less?	✓	
Seals		
Intumescent and smoke (where fitted): Head of door/frame complete and in good condition?	✓	
Intumescent and smoke (where fitted): Hanging edge of door/frame complete and in good condition?	✓	
Intumescent and smoke (where fitted): Closing edge of door/frame complete and in good condition?	✓	
Leaf		
Both front and back faces undamaged?	✓	
All edges undamaged?	✓	
Frame		
Undamaged (e.g. impact)?	✓	
Fixed securely to surrounding structure?	✓	
No gaps between frame and surrounding structure?	✓	
Additional		
Closer: Fitted securely and working effectively?	✓	
3 hinges fitted and in good condition?	✓	
Hinge screw fixings in place?	✓	
Lock/latch in good condition and working correctly?	✓	
Glass undamaged?	N/A	
Glass retention system complete and undamaged?	N/A	
Letterbox: Intumescent liner around inside or sprung metal flaps that close effectively?	N/A	

Asset: zzz - zzz		
Door Closing		
Before touching the door, is it properly closed fully into the frame?	✓	
Does the door close from fully open?	✓	
Does the door close when held open at 100mm?	✓	
Does the door close without binding on the floor?	✓	
Frame Gaps		
Head - 4mm or less?	✓	
Closing edge - 4mm or less (unless rebated)?	✓	
Hanging edge - 4mm or less (unless rebated)?	✓	
Threshold - 6mm or less?	✓	
Seals		
Intumescent and smoke (where fitted): Head of door/frame complete and in good condition?	✓	
Intumescent and smoke (where fitted): Hanging edge of door/frame complete and in good condition?	✓	
Intumescent and smoke (where fitted): Closing edge of door/frame complete and in good condition?	✓	
Leaf		
Both front and back faces undamaged?	✓	
All edges undamaged?	✓	
Frame		
Undamaged (e.g. impact)?	✓	
Fixed securely to surrounding structure?	✓	
No gaps between frame and surrounding structure?	✓	
Additional		
Closer: Fitted securely and working effectively?	✓	
3 hinges fitted and in good condition?	✓	
Hinge screw fixings in place?	✓	
Lock/latch in good condition and working correctly?	✓	
Glass undamaged?	✓	
Glass retention system complete and undamaged?	✓	
Letterbox: Intumescent liner around inside or sprung metal flaps that close effectively?	N/A	

Asset: yyy - yyy		
Door Closing		
Before touching the door, is it properly closed fully into the frame?	✓	
Does the door close from fully open?	✓	
Does the door close when held open at 100mm?	✓	
Does the door close without binding on the floor?	✓	
Frame Gaps		
Head - 4mm or less?	✓	
Closing edge - 4mm or less (unless rebated)?	✓	
Hanging edge - 4mm or less (unless rebated)?	✓	
Threshold - 6mm or less?	✓	
Seals		
Intumescent and smoke (where fitted): Head of door/frame complete and in good condition?	✓	
Intumescent and smoke (where fitted): Hanging edge of door/frame complete and in good condition?	✓	
Intumescent and smoke (where fitted): Closing edge of door/frame complete and in good condition?	✓	
Leaf		
Both front and back faces undamaged?	✓	
All edges undamaged?	✓	
Frame		
Undamaged (e.g. impact)?	✓	
Fixed securely to surrounding structure?	✓	
No gaps between frame and surrounding structure?	✓	
Additional		
Closer: Fitted securely and working effectively?	✓	
3 hinges fitted and in good condition?	✓	
Hinge screw fixings in place?	✓	
Lock/latch in good condition and working correctly?	✓	
Glass undamaged?	✓	
Glass retention system complete and undamaged?	✓	
Letterbox: Intumescent liner around inside or sprung metal flaps that close effectively?	N/A	